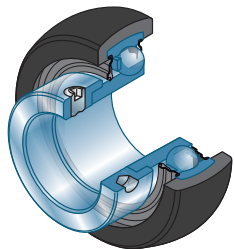


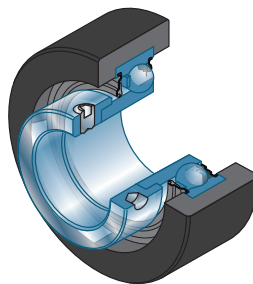
→ Bearing insert

with rubber damping ring

ESR200, CESR200



Form: spherical



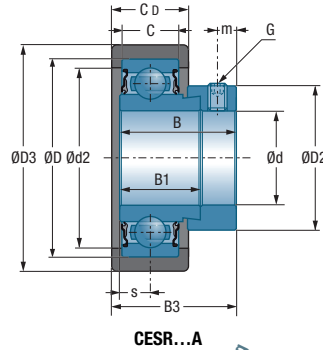
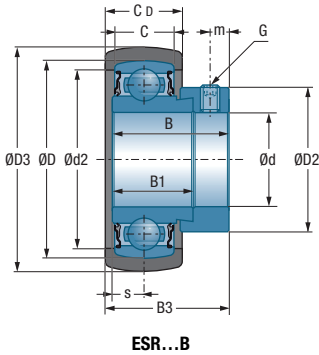
Form: cylindrical

d mm	Unit	Bearing insert	rubber damping ring	Form	Main dimensions [mm]			
					D	D3	C _D	C
12	ESR201B	ES201SRS	SRBB203	spherical	40	47,3	17,6	12,0
15	ESR202B	ES202SRS	SRBB203	spherical	40	47,3	17,6	12,0
20	ESR204B	ES204SRS	SRBB204	spherical	47	52,3	17,6	14,0
25	ESR205B	ES205SRS	SRBB205	spherical	52	62,2	20,8	15,0
30	ESR206B	ES206SRS	SRBB206	spherical	62	72,2	23,0	18,0
35	ESR207B	ES207SRS	SRBB207	spherical	72	80,2	24,0	19,0
40	ESR208B	ES208SRS	SRBB208	spherical	80	85,0	27,0	21,0
50	ESR210B	ES210SRS	SRBB210	spherical	90	100,2	30,0	22,0

15	CESR202A	CES202SRS	SRCA203	cylindrical	40	65,1	25,4	12,0
17	CESR203A	CES203SRS	SRCA203	cylindrical	40	65,1	25,4	12,0
20	CESR204A	CES204SRS	SRCA204	cylindrical	47	65,1	25,4	14,0
25	CESR205A	CES205SRS	SRCA205	cylindrical	52	65,1	25,4	15,0

- Rubber damping rings are intended to reduce noise and vibration
- Hardness of rubber: $70 \pm 5^\circ$ SHORE A / Material: NBR
- Filled with long life grease / non-relubricatable

- Reduced friction torque through optimised sealing lip
- Noise inspected
- Operating temperatures: -20°C up to $+85^\circ\text{C}$
- Inner- and eccentric ring zinc-plated



Main dimensions [mm]

Dynamic load rating
 Static load rating
 Weight unit
 Shaft diameter

B	B1	B3	D2	d2	s	m	G	C_r [kN]	C_{0r} [kN]	[kg]	d mm
28,6	19,0	30,9	27,2	33,5	6,5	5,0	M6x1	9,55	4,78	0,16	12
28,6	19,0	30,9	27,2	33,5	6,5	5,0	M6x1	9,55	4,78	0,15	15
31,0	21,4	32,3	32,4	39,0	7,5	5,0	M6x1	12,80	6,65	0,18	20
31,0	21,4	33,9	37,4	44,5	7,5	5,0	M6x1	14,00	7,88	0,22	25
35,7	23,8	38,2	44,1	54,0	9,0	6,0	M8x1	19,50	11,20	0,37	30
38,9	25,4	41,4	51,1	62,0	9,5	6,5	M8x1	25,70	15,20	0,54	35
43,7	30,2	46,2	58,0	70,0	11,0	6,5	M8x1	29,60	18,20	0,68	40
43,7	30,2	47,7	67,2	80,0	11,0	6,5	M8x1	35,10	23,20	0,88	50

28,6	19,0	34,8	27,2	35,0	6,5	5,0	M6x1	9,55	4,78	0,21	15
28,6	19,0	34,8	27,2	35,0	6,5	5,0	M6x1	9,55	4,78	0,20	17
31,0	21,4	36,2	32,4	40,0	7,5	5,0	M6x1	12,80	6,65	0,22	20
31,0	21,4	36,2	37,4	46,0	7,5	5,0	M6x1	14,00	7,88	0,26	25

